

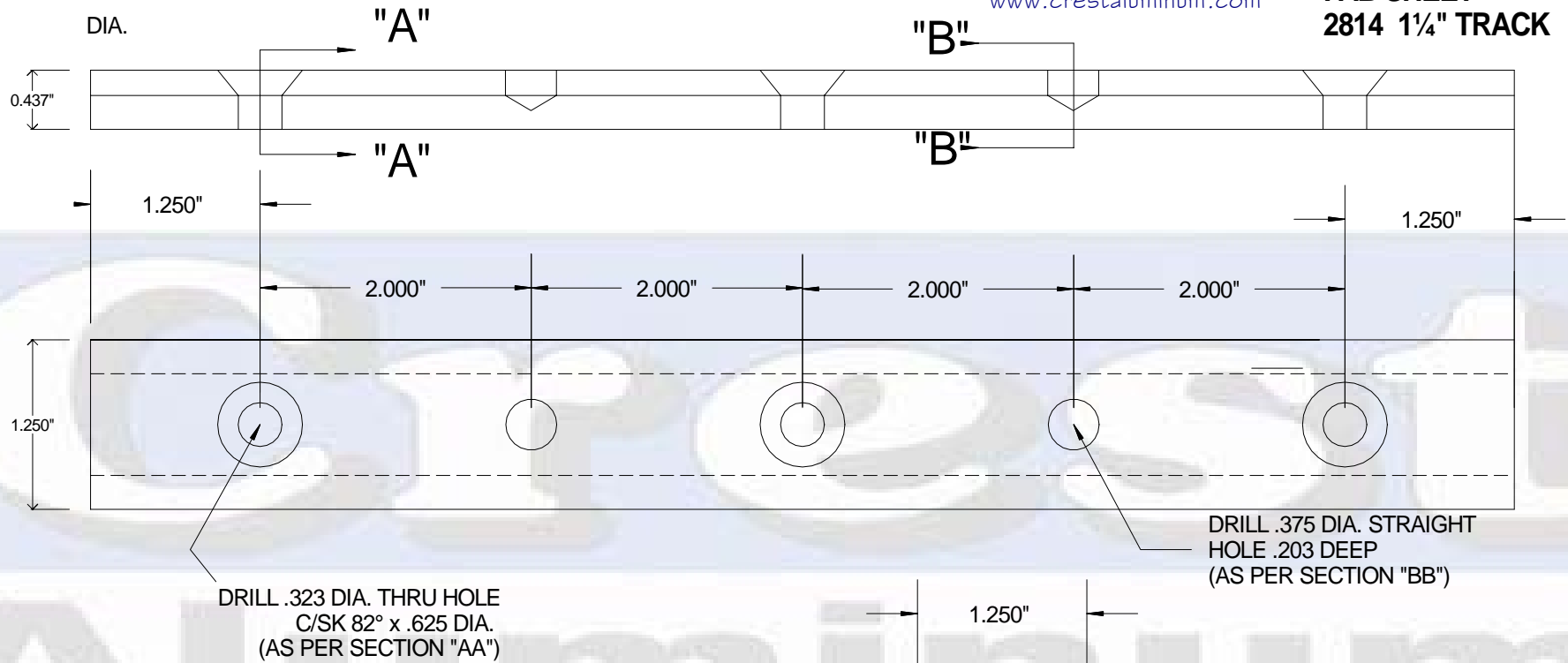
CREST 2814 - 1 1/4 "T" Track



Crest Aluminum Products Inc
Part No. C-2817
Crest "T" Rail

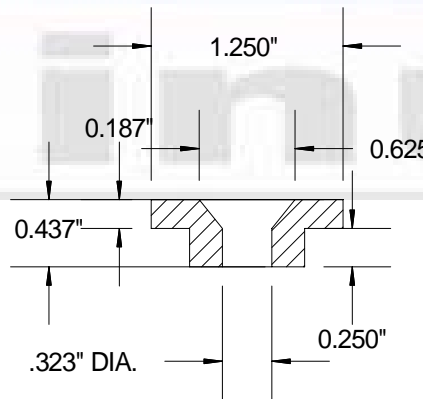
MARINE PRODUCTS
www.crestaluminum.com

FAB SHEET 2814 1 1/4" TRACK

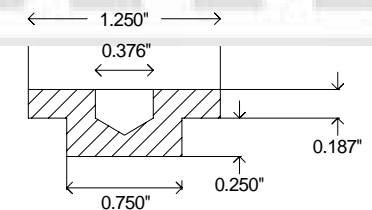


DRILL .323 DIA. THRU HOLE
C/SK 82° x .625 DIA.
(AS PER SECTION "AA")

DRILL .375 DIA. STRAIGHT
HOLE .203 DEEP
(AS PER SECTION "BB")

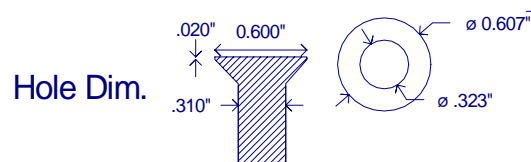


SECTION "AA"



SECTION "BB"

[A] LENGTH	[B] NO. SPACES	NO. OF FAST HOLES	[C] NO. SPACES	NO. OF STOP HOLES
1'-10 1/2"	5	6	4	5
3'-10 1/2"	11	12	10	11
5'-10 1/2"	17	18	16	17
7'-10 1/2"	23	24	22	23
9'-10 1/2"	29	30	28	29
11'-10 1/2"	35	36	34	35
13'-10 1/2"	41	42	40	41
19'-10 1/2"	59	60	58	59



PART NO	C-2814		Crest Aluminum Products Inc 8287 Tyler Blvd Mentor OH 44060 USA	REVISIONS	DATE
ALLOY	6061 T-6		JOB NO.	DATE: 11/21/06	
FINISH	BLK HDCT ANOD 30 MIN CLR VELO	CUSTOMER / PROJECT 2814 1 1/4 "T" Track			
LENGTHS	VARY	© Crest Aluminum Products Inc 2006 J.M. Allin			
UNSPEC RADIUS	.016"				
DRAWING BY:	J. M. ALLIN				